

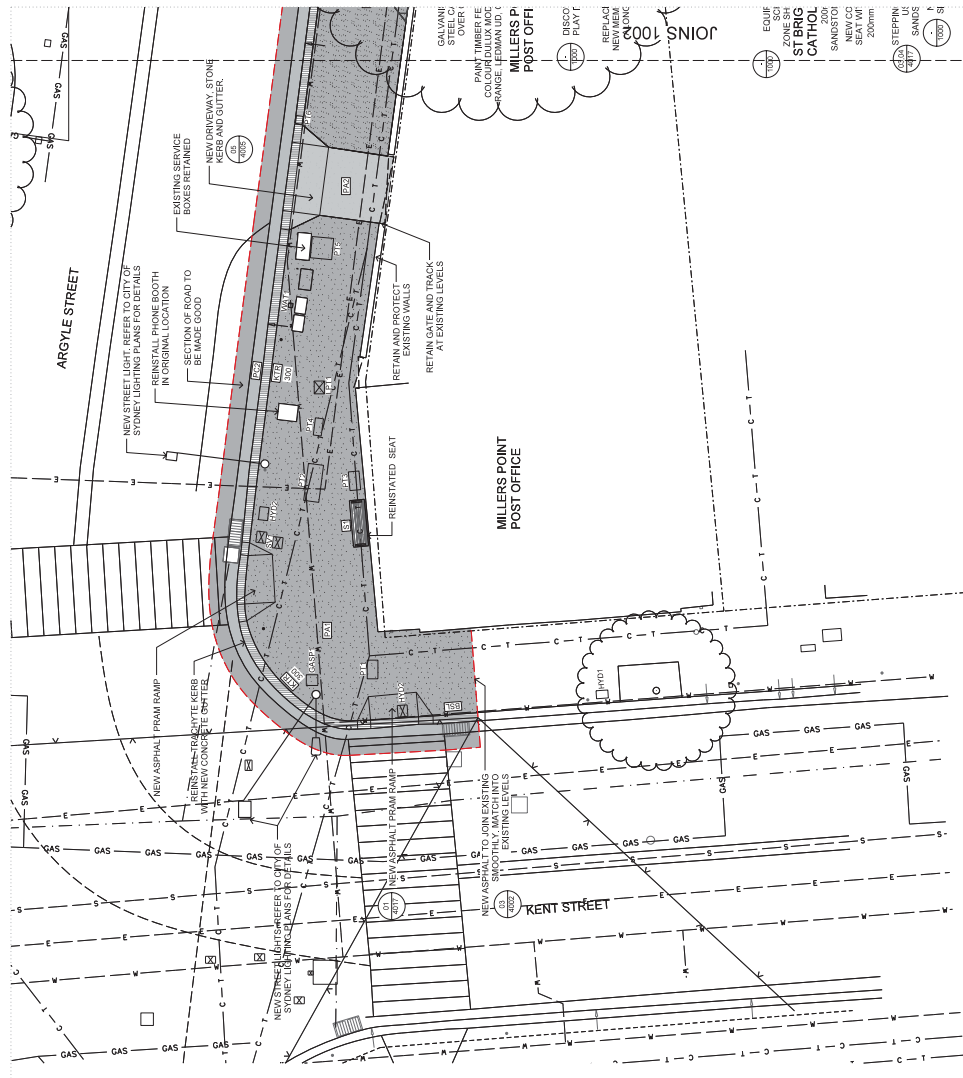
ATTACHMENT A

**ATTACHMENT A**

**GENERAL ARRANGEMENT PLAN**



# ATTACHMENT A



**Project Title**  
MILLERS POINT  
MILLERS POINT

**Drawn By**  
AM

**Checked By**  
SH

**Creation Date**  
16/05/14

**Scale**  
1:200 @ A1  
1:200 @ A3

**Job No**  
13217

**Director No**  
A-1001

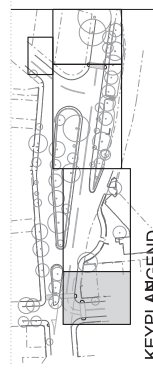
**Label**  
G

**Plotted and checked by**  
AM

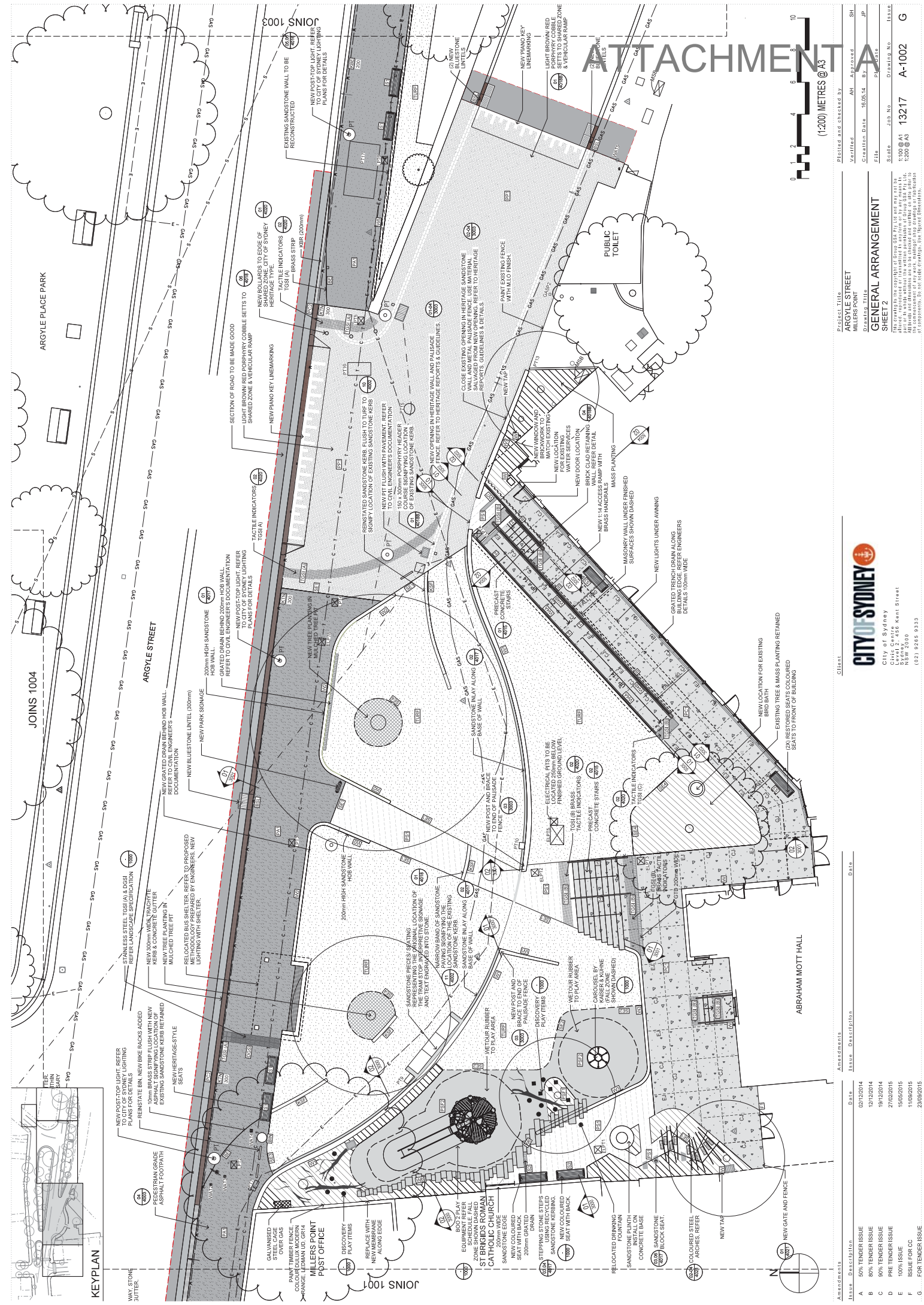
**General Arrangement**  
SHEET 1

THE DRAWING IS THE PROPERTY OF GROUP G&S PTY LTD AND MAY NOT BE REPRODUCED OR TRANSMITTED IN ANY FORM OR BY ANY MEANS, ELECTRONIC OR MECHANICAL, INCLUDING PHOTOCOPYING, RECORDING, OR BY ANY INFORMATION STORAGE AND RETRIEVAL SYSTEM, WITHOUT THE WRITTEN PERMISSION OF GROUP G&S PTY LTD. THE CONTRACTOR SHALL BE RESPONSIBLE FOR OBTAINING ALL NECESSARY PERMITS AND APPROVALS FROM THE RELEVANT AUTHORITIES. THE CONTRACTOR SHALL BE RESPONSIBLE FOR OBTAINING ALL NECESSARY PERMITS AND APPROVALS FROM THE RELEVANT AUTHORITIES. THE CONTRACTOR SHALL BE RESPONSIBLE FOR OBTAINING ALL NECESSARY PERMITS AND APPROVALS FROM THE RELEVANT AUTHORITIES.

- NEW TRACTYTE KERB (FROM CITY OF SYDNEY DEPT) AND CONCRETE GUTTER**
  - EXISTING SANDSTONE KERB RETAINED IN CURRENT LOCATION (EXISTING CONCRETE GUTTER ALSO REMAINED)**
  - EXISTING SANDSTONE KERB TO BE LIFTED, SHAPED IF NECESSARY AND RELIED WITH NEW CONCRETE GUTTER**
  - NEW SANDSTONE KERB AND CONCRETE GUTTER**
  - EXISTING SANDSTONE KERB RELIED FLUSH TO TURF PAVING**
  - PLAY EQUIPMENT (NEW) BOOZIE CURBY HOUSE AND SLIDE (BY PLAY ROPE)**
  - PLAY EQUIPMENT (CAROUSEL BY K&B&R & PUMPE)**
  - DISCOVERY PLAY ITEMS (INCLUDE ELEMENTS: TIMBER LOG STEPPERS SANDSTONE STEPPERS, COLOURED STEEL ARCHES)**
  - REINFORCED CONCRETE BRINKING FOUNTAIN (FROM ARGYLE STREET FOOTPATH)**
  - HERITAGE STYLE SEAT WITH BACK & ARMRESTS (FROM EMERDYN - EMASA)**
  - HERITAGE STYLE SEAT WITH BACK AND ARMRESTS (FROM EMERDYN - EMASA)**
  - REINFORCED CONCRETE HERITAGE STYLE SEAT WITH BACK AND ARMRESTS**
  - HERITAGE STYLE SEAT (TO BE SHAPED SURFACE TO PLAY AREAS)**
  - EXISTING REINFORCED CONCRETE SEAT (REFER TO INDICATIVE PLANT SCHEDULE) SHAPED & REINFORCED**
  - EXISTING AND/OR RELOCATED WATER POINT**
  - POST TOP LIGHT TO MATCH TYPE USED IN STREET LIGHTING (REFER TO CITY OF SYDNEY SPECIFICATION)**
  - NEW POST TOP LIGHTS (REFER TO CITY OF SYDNEY LIGHTING PLANS FOR DETAILS (NEW SYMMETRIC GE 'twit Contemporary Luminaire on a 6.5m standard CoS Light pole))**
  - NEW STREET LIGHTS (REFER TO CITY OF SYDNEY LIGHTING PLANS FOR DETAILS (BRWLED GE R220 Luminaire))**
  - NEW STREET LIGHTS (REFER TO CITY OF SYDNEY LIGHTING PLANS FOR DETAILS (150 - 250W HPS SIA Symloc))**
  - EXISTING LEVELS TO BE RETAINED**
  - PROPOSED LEVELS**
  - NEW MSB LOCATION**
  - TSGI (A)**
  - TSGI (B)**
  - DGSI**
  - HM DRINKAL**
  - NEW BLUESTONE LINTEL**
  - BALLUSTRADE**
  - BRASS EDGE**
- SERVICE LINES**
- E - ELECTRICITY
  - GAS - GAS
  - S - SEWER
  - W - WATER
  - T - TELECOM
  - ST - STORMWATER
- NOTE:**  
Taps to be connected to rainwater tank. Water supply bubbler to be connected to potable water line.  
Bubbler discharge to be connected to sub soil drain.



- KEY PLAN LEGEND**
- EXISTING TREE TO BE PROTECTED AND RETAINED**
  - PROPOSED TREE PLANTING**
  - PEDESTRIAN GRADE ASPHALT FOOTPATH**
  - VEHICULAR GRADE ASPHALT FOOTPATH**
  - PEDESTRIAN GRADE CONCRETE SURFACE LIGHTLY EXPOSED AGGREGATE FINISH**
  - VEHICULAR GRADE CONCRETE SURFACE (GUTTERS & DRIVEWAYS)**
  - 150 x 150mm PORPHYRY PAVING AND 90 x 90mm COBBLE SETTS**
  - PEDESTRIAN GRADE SANDSTONE FLAGGING PAVING**
  - PEDESTRIAN GRADE ASPHALT PRAM RAMP**
  - TACTILE BRICKING SURFACE INDICATORS (TOSI)**
  - PERFORATED CONCRETE SURFACE INDICATORS (OSI)**
  - CURBERE & SOFTFALL MULCH TO PLAY AREAS**
  - DARK GREEN HET FLOOR RUBBER SURFACE TO PLAY AREAS**
  - MASS PLANTER (REFER TO INDICATIVE PLANT SCHEDULE)**
  - MULCHED AREA (MULCH)**
  - MULCHED TREE PIT (NO UNDERSTOREY PLANTING)**
  - HERITAGE SANDSTONE WALL WITH METAL PAULSADE FENCE TO 1.7m HEIGHT (VARIABLE HEIGHTS)**
  - 200mm HIGH SANDSTONE BLOCK HOBB WALL**
  - RAKED SANDSTONE BLOCK WALL (HEIGHT VARIES)**
  - STEEL CLAD BLOCKWORK WALL BLOCKWORK TO BE CONCRETED WITH 150mm BELLON SURFACE LEVELS**
  - RECONSTRUCTED SANDSTONE WALL**
  - SANDSTONE BLOCK WALL HEIGHT VARIES**
  - BRICK CLAD BLOCKWORK RETAINING WALL (BALLUSTRADE TO 1.0m)**
  - INSITU CONCRETE STAIRS LIGHT EXPOSED AGGREGATE FINISH**
  - BRASS HANDRAIL TO STEPS & RAMPS**
  - GALVANISED STEEL EDGE TO PAVING**
  - GALVANISED STEEL EDGE TO WEAROUR RUBBER**
  - GALVANISED STEEL EDGE TO ASPHALT FOOTPATH**
  - GALVANISED STEEL EDGE TO GARDEN BED**
  - GRATED INLET PIT TO ENGINEERS DOCUMENTATION. USE WEELPROOF GRATE IN PAVED AREAS.**
  - GRATED FRENCH DRAIN TO ENGINEERS DOCUMENTATION. USE WEELPROOF GRATE IN PAVED AREAS.**
  - SECTION OF ROAD ADJACENT NEW CONCRETE GUTTER TO BE MADE GOOD**
  - EXISTING BLUESTONE KERB RETAINED IN CURRENT LOCATION (EXISTING CONCRETE GUTTER ALSO RETAINED)**
  - EXISTING BLUESTONE KERB TO BE LIFTED, SHAPED IF NECESSARY AND RELIED WITH NEW CONCRETE GUTTER**
  - NEW BLUESTONE KERB AND CONCRETE GUTTER**
  - EXISTING TRACTYTE KERB RETAINED IN CURRENT LOCATION (EXISTING CONCRETE GUTTER ALSO RETAINED)**
  - EXISTING TRACTYTE KERB TO BE LIFTED, SHAPED IF NECESSARY AND RELIED WITH NEW CONCRETE GUTTER**
- Amendments**
- | Issue | Description      | Date       |
|-------|------------------|------------|
| A     | 50% TENDER ISSUE | 09/12/2014 |
| B     | 80% TENDER ISSUE | 19/02/2014 |
| C     | 90% TENDER ISSUE | 19/02/2014 |
| D     | PRE TENDER ISSUE | 27/02/2015 |
| E     | 100% ISSUE       | 15/02/2015 |
| F     | ISSUE FOR CC     | 11/02/2015 |
| G     | FOR TENDER ISSUE | 23/02/2015 |



# ATTACHMENT A



Project Title: ARGYLE STREET MILLERS POINT  
 Drawn This: [Blank]  
 Creation Date: 16/05/14  
 File: [Blank]  
 Scale: Job No. 13217  
 Drawing No. A-1002  
 Issue: 1320 @ A3  
 Date: 12/05/14  
 Checked by: [Blank]  
 SH: [Blank]  
 JP: [Blank]  
 P: [Blank]  
 G: [Blank]

## GENERAL ARRANGEMENT SHEET 2

This drawing is the property of Group G&S Pty Ltd and may not be copied, reproduced, stored in a retrieval system, or transmitted in any form or by any means, electronic, mechanical, photocopying, recording, or by any information storage and retrieval system, without the written permission of Group G&S Pty Ltd. The contractor shall be responsible for the accuracy of the information and drawings of the site and for the completion of the work. All dimensions are in metres unless otherwise stated. For further details, refer to the relevant drawings.

Client: CITY OF SYDNEY  
 City of Sydney  
 Council Chambers  
 City Hall  
 200 NSW 2000  
 (02) 9226 9333

Issue	Description	Date
A	50% TENDER ISSUE	09/12/2014
B	80% TENDER ISSUE	19/02/2014
C	90% TENDER ISSUE	18/02/2014
D	PRIE TENDER ISSUE	27/02/2015
E	100% ISSUE	15/02/2015
F	ISSUE FOR CC	11/02/2015
G	FOR TENDER ISSUE	23/02/2015

### KEYPLAN

NEW POST-TOP LIGHT, REFER TO CITY OF SYDNEY LIGHTING PLANS FOR DETAILS  
 REINSTATE BIN NEW BIKES RACKS ADDED REFER LANDSCAPE SPECIFICATION  
 NEW 800mm WIDE TRAVELWAY KERB & CONCRETE CUTTER  
 NEW TREE PLANTING IN MULCHED TREE PIT  
 RELOCATED BUS SHELTER, REFER TO PROPOSED METHODOLOGY PREPARED BY ENGINEERS, NEW LIGHTING WITH SHELTER.  
 NEW GRATED DRAIN BEHIND HOB WALL, REFER TO CIVIL ENGINEERS DOCUMENTATION  
 NEW BLUESTONE LINTEL (300mm)  
 NEW PARK SIGNAGE  
 GALVANISED STEEL CAGE  
 PAINT TIMBER FENCE  
 COLOUR DULUX MODERN RANGE, LEIDIAN UD GR14  
 DISCOVERY PLAY ITEMS  
 REPLACE WITH NEW MEMBRANE ALONG EDGE  
 NEW COLOURED SANDSTONE KERBING, 200mm GRATED DRAIN  
 STEPPING STONE STEPS  
 NEW COLOURED SANDSTONE KERBING, 200mm GRATED DRAIN  
 SEAT WITH BACK  
 RELOCATED DRINKING FOUNTAIN  
 SANDSTONE PLINTH CONCRETE BASE  
 SANDSTONE BLOCK SEAT  
 COLOURED STEEL ARCHES REFER  
 NEW TAP

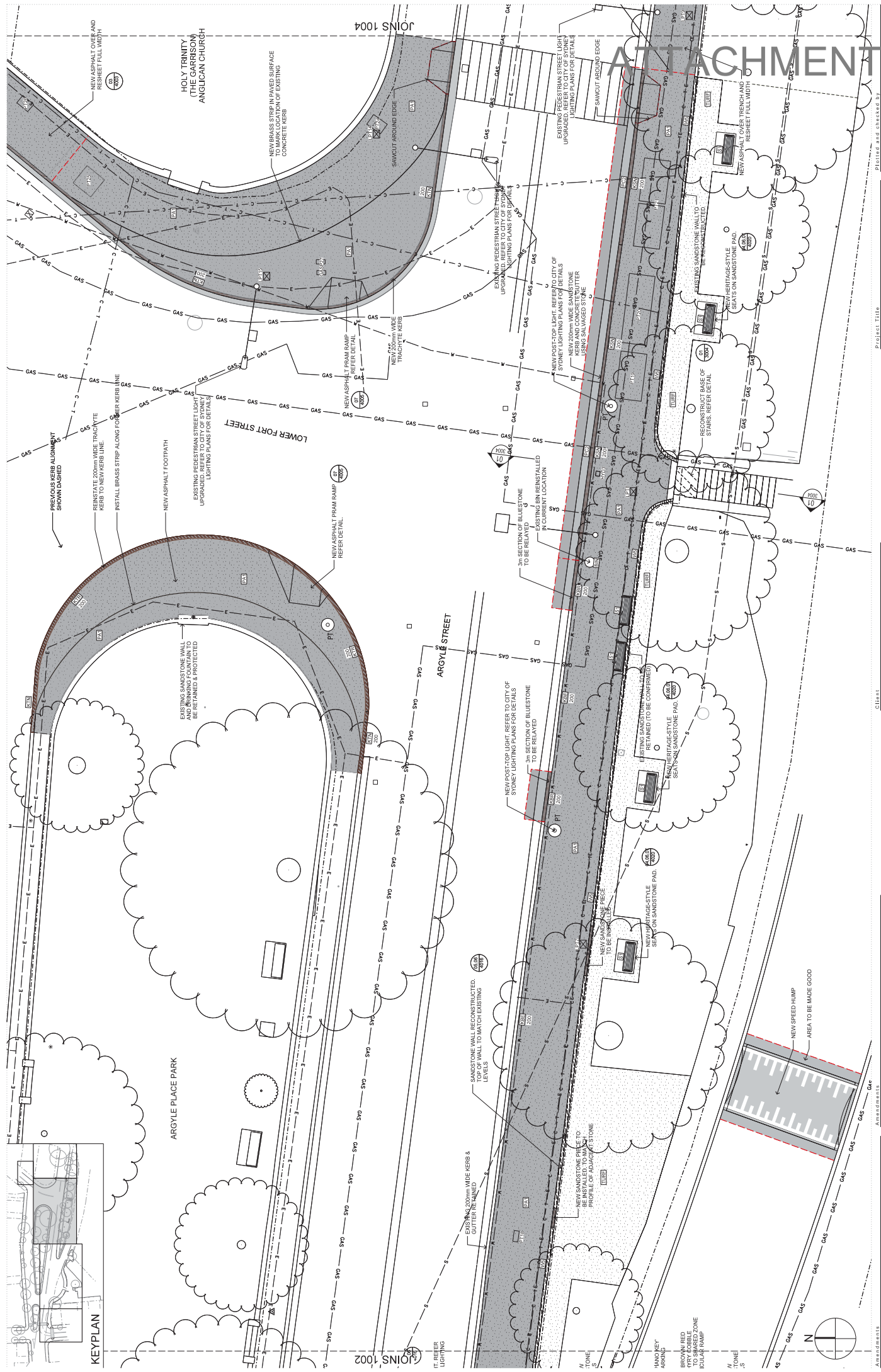
NEW POST-TOP LIGHT, REFER TO CITY OF SYDNEY LIGHTING PLANS FOR DETAILS  
 REINSTATE BIN NEW BIKES RACKS ADDED REFER LANDSCAPE SPECIFICATION  
 NEW 800mm WIDE TRAVELWAY KERB & CONCRETE CUTTER  
 NEW TREE PLANTING IN MULCHED TREE PIT  
 RELOCATED BUS SHELTER, REFER TO PROPOSED METHODOLOGY PREPARED BY ENGINEERS, NEW LIGHTING WITH SHELTER.  
 NEW GRATED DRAIN BEHIND HOB WALL, REFER TO CIVIL ENGINEERS DOCUMENTATION  
 NEW BLUESTONE LINTEL (300mm)  
 NEW PARK SIGNAGE  
 GALVANISED STEEL CAGE  
 PAINT TIMBER FENCE  
 COLOUR DULUX MODERN RANGE, LEIDIAN UD GR14  
 DISCOVERY PLAY ITEMS  
 REPLACE WITH NEW MEMBRANE ALONG EDGE  
 NEW COLOURED SANDSTONE KERBING, 200mm GRATED DRAIN  
 STEPPING STONE STEPS  
 NEW COLOURED SANDSTONE KERBING, 200mm GRATED DRAIN  
 SEAT WITH BACK  
 RELOCATED DRINKING FOUNTAIN  
 SANDSTONE PLINTH CONCRETE BASE  
 SANDSTONE BLOCK SEAT  
 COLOURED STEEL ARCHES REFER  
 NEW TAP

NEW POST-TOP LIGHT, REFER TO CITY OF SYDNEY LIGHTING PLANS FOR DETAILS  
 REINSTATE BIN NEW BIKES RACKS ADDED REFER LANDSCAPE SPECIFICATION  
 NEW 800mm WIDE TRAVELWAY KERB & CONCRETE CUTTER  
 NEW TREE PLANTING IN MULCHED TREE PIT  
 RELOCATED BUS SHELTER, REFER TO PROPOSED METHODOLOGY PREPARED BY ENGINEERS, NEW LIGHTING WITH SHELTER.  
 NEW GRATED DRAIN BEHIND HOB WALL, REFER TO CIVIL ENGINEERS DOCUMENTATION  
 NEW BLUESTONE LINTEL (300mm)  
 NEW PARK SIGNAGE  
 GALVANISED STEEL CAGE  
 PAINT TIMBER FENCE  
 COLOUR DULUX MODERN RANGE, LEIDIAN UD GR14  
 DISCOVERY PLAY ITEMS  
 REPLACE WITH NEW MEMBRANE ALONG EDGE  
 NEW COLOURED SANDSTONE KERBING, 200mm GRATED DRAIN  
 STEPPING STONE STEPS  
 NEW COLOURED SANDSTONE KERBING, 200mm GRATED DRAIN  
 SEAT WITH BACK  
 RELOCATED DRINKING FOUNTAIN  
 SANDSTONE PLINTH CONCRETE BASE  
 SANDSTONE BLOCK SEAT  
 COLOURED STEEL ARCHES REFER  
 NEW TAP

NEW POST-TOP LIGHT, REFER TO CITY OF SYDNEY LIGHTING PLANS FOR DETAILS  
 REINSTATE BIN NEW BIKES RACKS ADDED REFER LANDSCAPE SPECIFICATION  
 NEW 800mm WIDE TRAVELWAY KERB & CONCRETE CUTTER  
 NEW TREE PLANTING IN MULCHED TREE PIT  
 RELOCATED BUS SHELTER, REFER TO PROPOSED METHODOLOGY PREPARED BY ENGINEERS, NEW LIGHTING WITH SHELTER.  
 NEW GRATED DRAIN BEHIND HOB WALL, REFER TO CIVIL ENGINEERS DOCUMENTATION  
 NEW BLUESTONE LINTEL (300mm)  
 NEW PARK SIGNAGE  
 GALVANISED STEEL CAGE  
 PAINT TIMBER FENCE  
 COLOUR DULUX MODERN RANGE, LEIDIAN UD GR14  
 DISCOVERY PLAY ITEMS  
 REPLACE WITH NEW MEMBRANE ALONG EDGE  
 NEW COLOURED SANDSTONE KERBING, 200mm GRATED DRAIN  
 STEPPING STONE STEPS  
 NEW COLOURED SANDSTONE KERBING, 200mm GRATED DRAIN  
 SEAT WITH BACK  
 RELOCATED DRINKING FOUNTAIN  
 SANDSTONE PLINTH CONCRETE BASE  
 SANDSTONE BLOCK SEAT  
 COLOURED STEEL ARCHES REFER  
 NEW TAP

NEW POST-TOP LIGHT, REFER TO CITY OF SYDNEY LIGHTING PLANS FOR DETAILS  
 REINSTATE BIN NEW BIKES RACKS ADDED REFER LANDSCAPE SPECIFICATION  
 NEW 800mm WIDE TRAVELWAY KERB & CONCRETE CUTTER  
 NEW TREE PLANTING IN MULCHED TREE PIT  
 RELOCATED BUS SHELTER, REFER TO PROPOSED METHODOLOGY PREPARED BY ENGINEERS, NEW LIGHTING WITH SHELTER.  
 NEW GRATED DRAIN BEHIND HOB WALL, REFER TO CIVIL ENGINEERS DOCUMENTATION  
 NEW BLUESTONE LINTEL (300mm)  
 NEW PARK SIGNAGE  
 GALVANISED STEEL CAGE  
 PAINT TIMBER FENCE  
 COLOUR DULUX MODERN RANGE, LEIDIAN UD GR14  
 DISCOVERY PLAY ITEMS  
 REPLACE WITH NEW MEMBRANE ALONG EDGE  
 NEW COLOURED SANDSTONE KERBING, 200mm GRATED DRAIN  
 STEPPING STONE STEPS  
 NEW COLOURED SANDSTONE KERBING, 200mm GRATED DRAIN  
 SEAT WITH BACK  
 RELOCATED DRINKING FOUNTAIN  
 SANDSTONE PLINTH CONCRETE BASE  
 SANDSTONE BLOCK SEAT  
 COLOURED STEEL ARCHES REFER  
 NEW TAP

NEW POST-TOP LIGHT, REFER TO CITY OF SYDNEY LIGHTING PLANS FOR DETAILS  
 REINSTATE BIN NEW BIKES RACKS ADDED REFER LANDSCAPE SPECIFICATION  
 NEW 800mm WIDE TRAVELWAY KERB & CONCRETE CUTTER  
 NEW TREE PLANTING IN MULCHED TREE PIT  
 RELOCATED BUS SHELTER, REFER TO PROPOSED METHODOLOGY PREPARED BY ENGINEERS, NEW LIGHTING WITH SHELTER.  
 NEW GRATED DRAIN BEHIND HOB WALL, REFER TO CIVIL ENGINEERS DOCUMENTATION  
 NEW BLUESTONE LINTEL (300mm)  
 NEW PARK SIGNAGE  
 GALVANISED STEEL CAGE  
 PAINT TIMBER FENCE  
 COLOUR DULUX MODERN RANGE, LEIDIAN UD GR14  
 DISCOVERY PLAY ITEMS  
 REPLACE WITH NEW MEMBRANE ALONG EDGE  
 NEW COLOURED SANDSTONE KERBING, 200mm GRATED DRAIN  
 STEPPING STONE STEPS  
 NEW COLOURED SANDSTONE KERBING, 200mm GRATED DRAIN  
 SEAT WITH BACK  
 RELOCATED DRINKING FOUNTAIN  
 SANDSTONE PLINTH CONCRETE BASE  
 SANDSTONE BLOCK SEAT  
 COLOURED STEEL ARCHES REFER  
 NEW TAP



**KEYPLAN**

Project Title: **ARGYLE STREET MILLERS POINT**  
 Drawn This: **GENERAL ARRANGEMENT SHEET 3**  
 Scale: **1:500 @ A1**  
 Date: **13/2/2014**  
 Job No: **13217**  
 Drawing No: **A-1003**  
 Client: **G**

Plotted and checked by: **AM**  
 Checked by: **AM**  
 Issue Date: **13/2/2014**  
 Issue No: **1**  
 Issue Title: **GENERAL ARRANGEMENT SHEET 3**

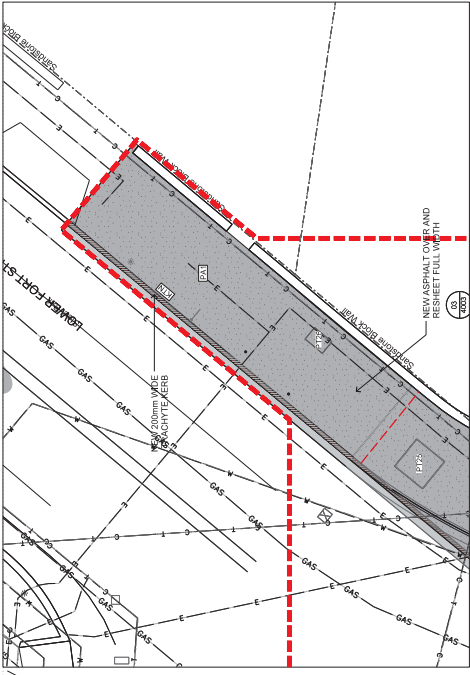
This drawing is the property of Group G&S Pty Ltd and may not be reproduced, stored in a retrieval system, or transmitted in any form or by any means, electronic, mechanical, photocopying, recording, or by any information storage and retrieval system, without the written permission of Group G&S Pty Ltd. The contractor shall be responsible for the interpretation of the drawings and for the completion of the work in accordance with the specifications, to the satisfaction of the Engineer in Charge.

Amendment	Issue	Description	Date
A	50% TENDER ISSUE		09/12/2014
B	80% TENDER ISSUE		19/12/2014
C	90% TENDER ISSUE		19/12/2014
D	PRE TENDER ISSUE		27/02/2015
E	100% ISSUE		15/02/2015
F	ISSUE FOR CC		17/02/2015
G	FOR TENDER ISSUE		23/02/2015



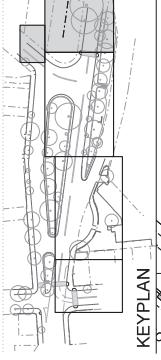
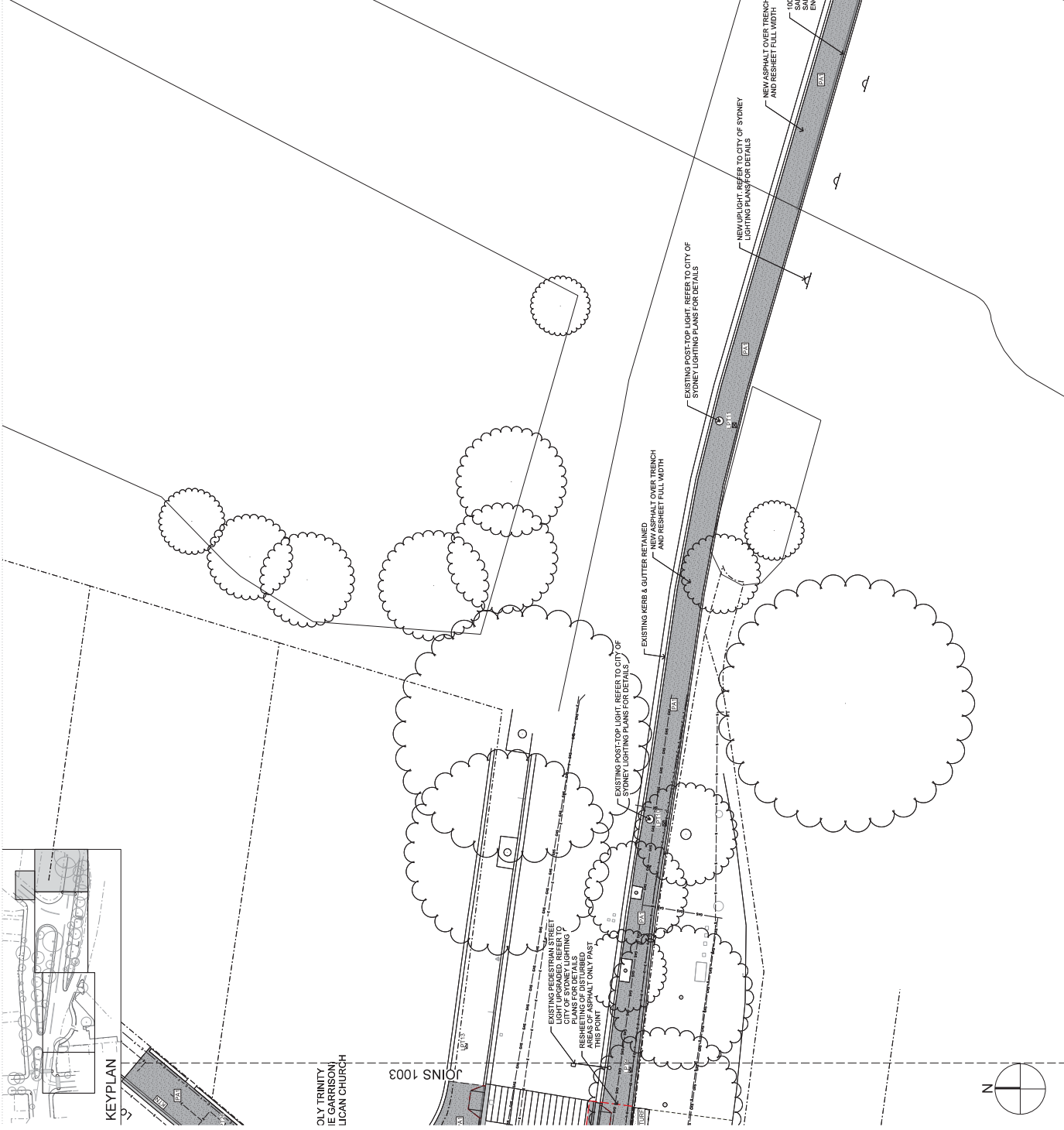
City of Sydney  
 Council Chambers  
 155 Kent Street  
 NSW 2000  
 (02) 9226 9333

# ATTACHMENT A



INSET A - FOOTPATH UPGRADE TO LOWER FORT STREET  
1:100 @ A1

NOTE: SCALE IS 1:200 @ A1 AND 1:400 @ A3 FOR THIS DRAWING ONLY



Project Title: ARGYLE STREET  
MILERS POINT

Drawn This: GENERAL ARRANGEMENT  
Sheet 4

Scale: 1:200 @ A1  
1:400 @ A3

Job No: 13217  
Director No: A-1004  
F

Client: CITY OF SYDNEY  
City of Sydney  
Level 15, 155 Kent Street  
NSW 2000  
(02) 9226 9333

Amendments	Issue	Description	Date
A	50% TENDER ISSUE		09/12/2014
B	80% TENDER ISSUE		12/02/2014
C	90% TENDER ISSUE		18/02/2014
D	PRE TENDER ISSUE		27/02/2015
E	100% ISSUE		15/02/2015
F	FOR TENDER ISSUE		23/02/2015

Plotted and checked by: JVS/MS/AM  
Created Date: 15/02/14  
File: 13217.dwg  
Scale: 1:200 @ A1  
1:400 @ A3

THE DRAWING IS THE PROPERTY OF GORUP G&P PTY LTD AND MAY NOT BE REPRODUCED OR TRANSMITTED IN ANY FORM OR BY ANY MEANS, WITHOUT THE WRITTEN PERMISSION OF GORUP G&P PTY LTD. THE CONTRACTOR SHALL BE RESPONSIBLE FOR OBTAINING ALL NECESSARY PERMITS AND APPROVALS FROM THE RELEVANT AUTHORITIES. THE CONTRACTOR SHALL BE RESPONSIBLE FOR OBTAINING ALL NECESSARY PERMITS AND APPROVALS FROM THE RELEVANT AUTHORITIES.